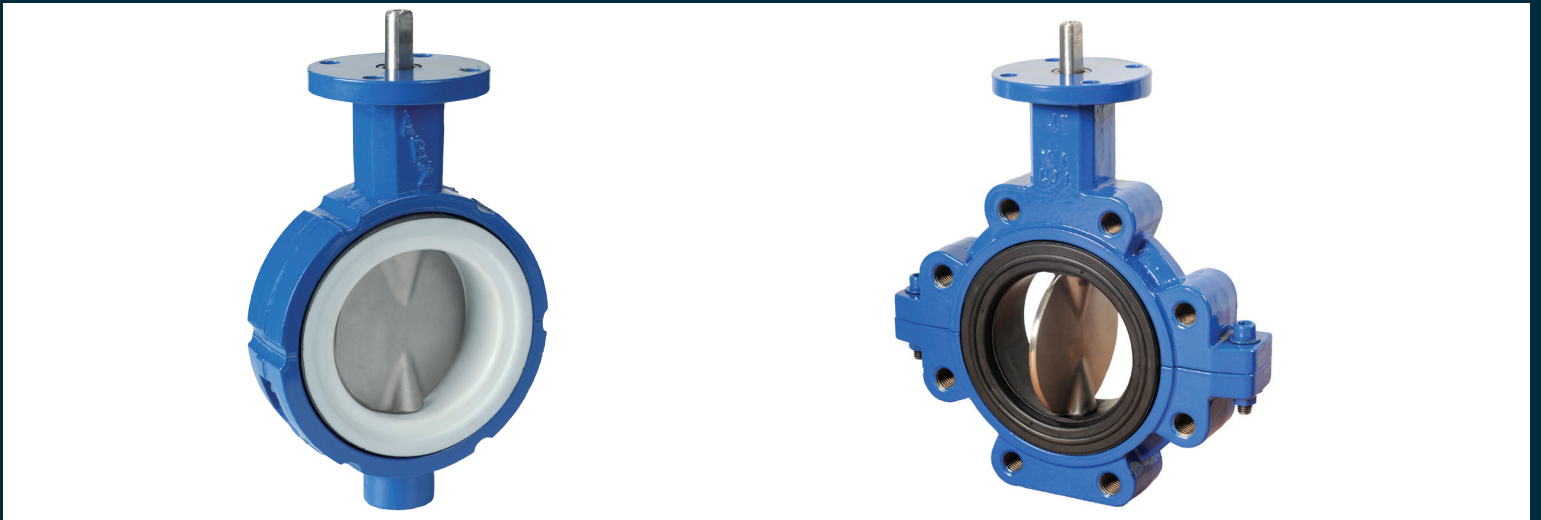
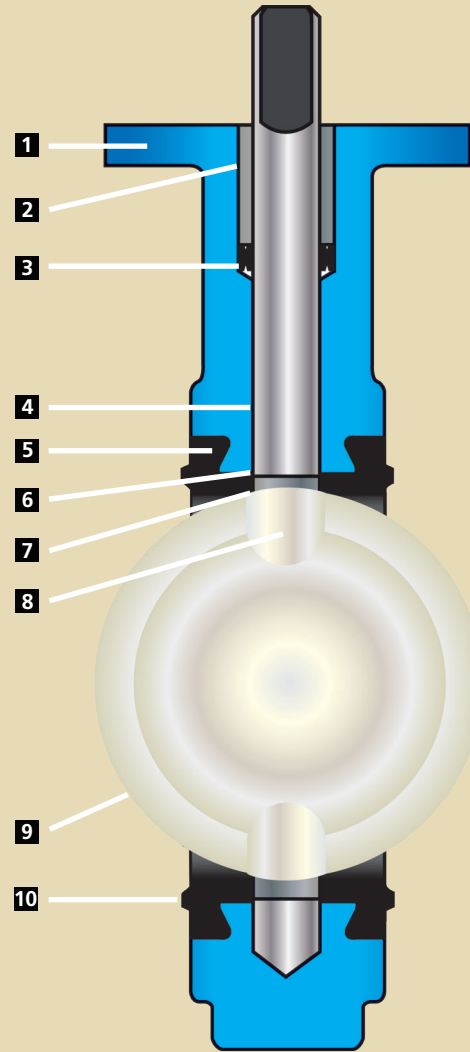


Smart Solutions. Powerful Products.



709/719 Resilient Seated Butterfly Valves

Features and Benefits:



- All bodies are machined to tight tolerances which guarantees standard dimensions for interchangeability of parts and operators.
- Top bushing protects the stem from side thrust of operators. They are made of impact and corrosion resistant materials.
- Special double V-shape of stem packing seal self-adjusts to protect the stem area.
- Two-piece body and one-piece stem/disc makes field replacement of seat and stem/disc quick and easy.
- The special snap-in Resil-O-Seat™ design secures seat in place without bonding. The Resil-O-Seat is 100% field replaceable - no special tools required. All standard seats are Food Grade with the exception of Viton™.
- The ABZ Ring Seal on the Teflon® seat is a molded part of the seat. It is a special design containing an o-ring which creates a positive seal around the stem as well as between the seat and valve body. This positive secondary seal eliminates leakage into the stem journal as well as migration of line media behind the seat.
- Stem and body are isolated from line media by the interference fit of the primary seal created between the disc and seat.
- Specially designed stem/disc prevents distortion of disc under high pressure. Thin disc profile allows for maximum flow.
- Disc edge is individually processed through machining and buffing for a smooth edge. This provides a bubble tight shut-off and maximizes the life of the seat.
- Resil-O-Seat forms a seal against all standard ANSI 125/150 flanges. Gasketing requirements are eliminated.

709 is a wafer style body

719 is a full lug style body

STANDARD CONSTRUCTION SPECIFICATIONS:

Body: Cast Iron, 316 Stainless Steel and Aluminum

Stem/Disc: 316 Stainless Steel, 17-4 Stainless Steel, and 17-4 Stainless Steel/PFA® covered Disc

Resilient Seat: EPDM, Buna-N, Viton, Teflon/EPDM, Teflon/Buna, Teflon/Viton

Stem Bushing: Teflon – Graphite Impregnated

Stem Packing: Buna-N or Viton

Additional materials are available for a wide selection of applications.

Notes:

- Dimension "K" not applicable to 10" or 12" size. The 10" and 12" stem is round with 1/4" Key.
- The figures 709 and 719 cannot be used on pipe or flange with an inside diameter less than "E" dimension.
- Valves are rated up to 150 PSI bi-directional service and 75 PSI end of line rating. Undercut disc is rated up to 50 PSI bi-directional service and 25 PSI end of line rating. Teflon covered disc rated to 100 PSI bi-directional service, 50 PSI end of line rating and not available in undercut. Teflon seats are not available with an undercut disc.
- Designed in accordance with sections of API 609 Category A, ASME 16.1/16.5, ASME 16.34 and MSS SP67. Design tested in accordance with API 598.
- Compatible with ANSI Class 125/150 flange standards.

Torque Chart - Figure 709/719

Valve Size	Normal Conditions				Severe Conditions			
	ΔP = 0	ΔP = 50	ΔP = 100	ΔP = 150	ΔP = 0	ΔP = 50	ΔP = 100	ΔP = 150
1"	60	68	72	76	80	86	90	96
1½"	107	114	120	127	133	143	150	160
2"	221	230	240	250	373	384	400	406
2½"	269	283	288	302	454	464	475	486
3"	322	341	365	379	540	568	589	611
4"	480	514	542	576	816	848	886	918
5"	653	706	754	806	1,102	1,162	1,220	1,274
6"	907	1,008	1,109	1,210	1,529	1,642	1,756	1,868
8"	1,512	1,714	1,915	2,112	2,549	2,776	3,002	3,229
10"	2,318	2,621	2,900	3,224	3,910	4,250	4,590	4,931
12"	3,125	3,629	4,138	4,637	5,270	5,838	6,404	6,971

Undercut disc available. All torques shown in inch lbs. 20% Safety factor already included.

Rated Flow Coefficient (Cv) - Figure 709/719

Valve Size	Angle of Disc Opening								
	10°	20°	30°	40°	50°	60°	70°	80°	90°
1"	60	68	72	76	80	86	90	96	96
1½"	0.22	1.7	6	12	23	41	71	109	155
2"	1.67	7.7	17	29	49	76	121	184	263
2½"	2.50	11.0	25	44	70	112	186	321	445
3"	3.33	15.7	37	64	107	170	290	492	701
4"	5.00	27.7	63	111	180	286	499	926	1,321
5"	8.33	43.7	99	178	280	456	794	1,473	2,123
6"	13.33	58.7	136	243	391	634	1,129	1,950	2,826
8"	20.00	107.3	247	436	697	1,127	1,940	3,604	5,272
10"	31.67	174.0	394	699	1,108	1,823	3,132	5,733	8,395
12"	47.00	251.7	578	1,007	1,690	2,734	4,618	8,309	12,214

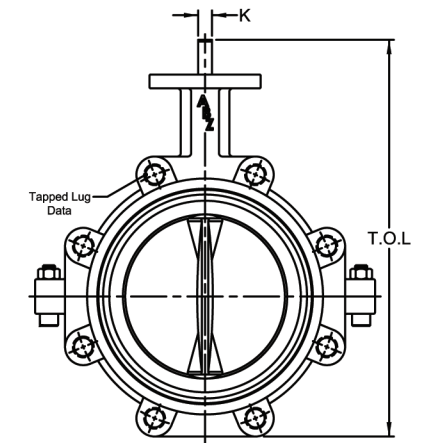
Sized for stainless disc, does not cover encapsulated disc trims.

Cv is defined as the volume of water in U.S.G.P.M. that will flow through a given restriction or valve opening with a pressure drop of one (1) p.s.i. at room temperature. Recommended control angles are between 20°-75° open.

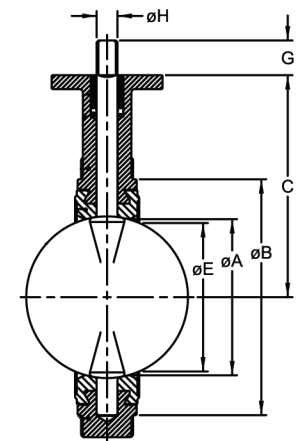
Dimensional Chart - Figure 709/719

Valve Size	Dimensions											Top Plate Drilling			Fig. 719 Tapped Lug Data			Weight (Pounds)	
	A	B	C	D	E	F	G	H	K	Keyway	T.O.L.	Bolt Circle	No. Holes	Hole Dia.	Bolt Circle	No. Holes	Tap	709	719
*#1"	1 3/16	2 3/8	3 5/32	1 1/8	1 1/16	3 1/2	3/4	3/8	1/4	-	5.08	1 1/4	4	5/16	N/A	N/A	N/A	2	N/A
*#1 1/2"	1 3/4	3 1/4	3 3/4	1 3/16	1 7/16	2 3/8	3/4	3/8	1/4	-	6.06	1 3/4	4	9/32	4 3/4	2	N/A	3	N/A
2"	2	3 3/8	5 1/2	1 5/8	1 3/8	4	1 1/4	9/16	3/8	-	9.25	3 1/4	4	7/16	4 3/4	4	5/8" - 11 UNC	7	8
*2 1/2"	2 1/2	4 5/8	6	1 3/4	2 1/16	4	1 1/4	9/16	3/8	-	10.06	3 3/4	4	7/16	5 1/2	4	5/8" - 11 UNC	9	11
3"	3	5 1/4	6 1/4	1 3/4	2 9/16	4	1 1/4	9/16	3/8	-	10.66	3 3/4	4	7/16	6	4	5/8" - 11 UNC	10	12
4"	4	6 3/8	7	2	3 3/8	4	1 1/4	5/8	7/16	-	12.53	3 3/4	4	7/16	7 1/2	8	5/8" - 11 UNC	15	21
*5"	5	7 5/8	7 1/2	2 1/8	4 3/4	4	1 1/4	3/4	1/2	-	13.31	3 3/4	4	7/16	8 1/2	8	3/4" - 10 UNC	18	25
6"	5 3/4	8 1/2	8	2 1/8	5 1/2	4	1 1/4	3/4	1/2	-	14.40	3 3/4	4	7/16	9 1/2	8	3/4" - 10 UNC	20	28
8"	7 3/4	10 5/8	9 1/2	2 1/2	7 1/2	6	1 1/4	7/8	5/8	-	17.25	5	4	9/16	11 3/4	2	3/4" - 10 UNC	36	46
10"	9 3/4	13	10 3/4	2 1/2	9 5/8	6	2	1 1/8	-	1/4 x 1/4	20.38	5	4	9/16	14 1/4	12	7/8" - 9 UNC	49	65
12"	11 3/4	15 3/4	12 1/4	3	11 9/16	6	2	1 1/8	-	1/4 x 1/4	23.07	5	4	9/16	17	12	7/8" - 9 UNC	74	98

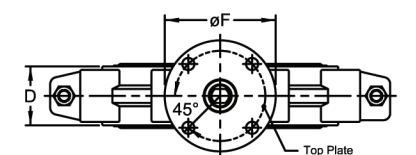
*Not available with Teflon PFA disc. #Not available with Teflon seat.



Flow View



Section View



Top View

Our goal is to become the leading provider of valves, valve related products and services in terms of customer satisfaction, safety and financial performance.

Our experienced management team and employees are dedicated to solving our customers' problems. We invest in long term relationships and cooperate on product development with our clients, we consider them our partners.

OUR CORE VALUES

No one gets hurt: The safety of our employees and customers is our first priority coupled with a healthy respect for the environment.

Integrity: In everything we do, in every interaction, both internally and externally, we strive to operate with the upmost integrity and mutual respect.

Customer focused: Our products enhance our customer's performance and we listen to their needs and work with them to solve their challenges.

Good place to work: We are committed to creating a workplace that fosters innovation, teamwork and pride. Every team member is integral to our success and is treated equally and fairly.



ABZ Valve & Controls
113 W. Main
Madison, KS 66860
620.437.2440 620.437.2435 [f]
f-e-t.com/ABZ
ABZ1003.10.15