



# Cast Stainless Steel Valves

NEWCO gate, globe, and check valves

# Cast Stainless Steel Valves

Cameron offers NEWCO\* gate, globe, and check valves in sizes ¼ to 24 in [5 to 600 mm], ASME Classes 150 to 1500, in various grades of stainless steel. These valves are constructed to meet and exceed industry standards.

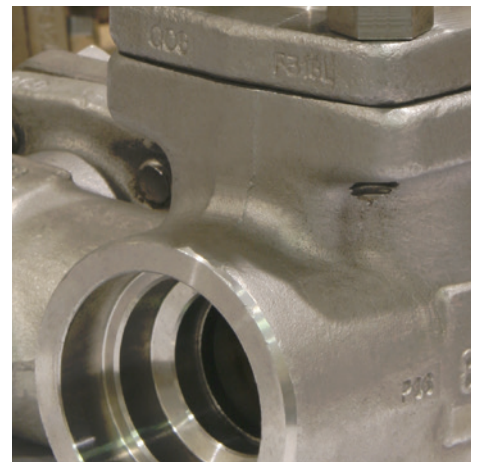
## Advantages

- Material test reports
- ISO certification
- Traceability
- Fugitive-emissions testing
- API Spec 598 testing
- Major end-user approval
- Extensive engineering capabilities
- Quality customer service
- Warranty
- In-house automation capabilities

## Cast stainless steel gate valves

- ¼ to 24 in [5 to 600 mm]
- Classes 150 to 1500

Cast stainless steel body and bonnet, rising stem, outside stem and yoke (OS&Y), ½- to 3-in solid wedge, 4-in and larger flexible wedge, integral seat rings, and stem backseat design





### Cast stainless steel check valves

- ¼ to 14 in [5 to 350 mm]
- Classes 150 to 1500

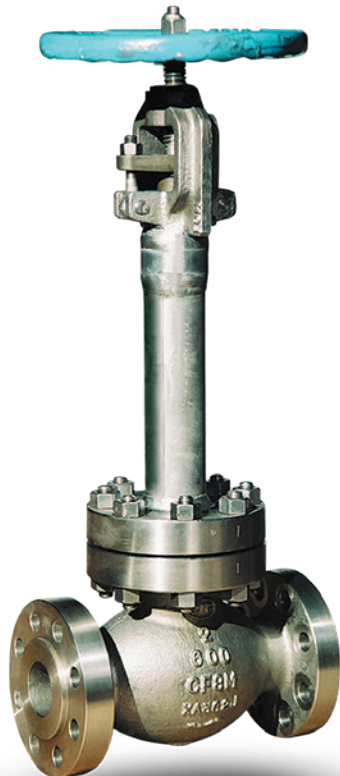
Cast stainless steel body and cap, swing-type disc, integral seat ring, and bolted cap



### Cast stainless steel globe valves

- ¼ to 12 in [5 to 300 mm]
- Classes 150 to 1500

Cast stainless steel body and bonnet, OS&Y, rising and nonrising handwheel, taper-type disc, integral seat ring, removable stem nut, and gland stem back seat design



### Cast stainless steel gate, globe, and check valves for special applications

- ¼ to 24 in [5 to 600 mm]
- Classes 150 to 1500

Valves available with special trims, gear operators, electrical or pneumatic actuation, bypass configurations, cavity overpressurization options, and cryogenic applications with extended bonnets upon request

# Cast Stainless Steel Valves



[cameron.slb.com/newco](http://cameron.slb.com/newco)

\*Mark of Schlumberger  
Other company, product, and service names  
are the properties of their respective owners.  
Copyright © 2018 Schlumberger. All rights reserved. 18-VL-380084

