



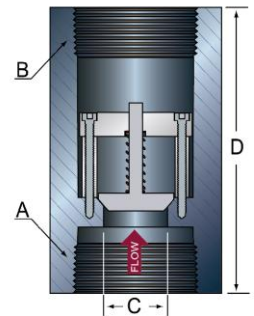
CHECK VALVE – 3250

3250 Series Back Pressure Check Valves are designed for use in liquid or vapor service for bulk storage tanks where flow is desired in only one direction. The 3250 Series has female NPT connections on the inlet side and female NPT connections on the outlet side. These valves can also be used as a vacuum breaker or low-pressure relief device.



	A Inlet Connection	B Outlet Connection	C Orifice Dia.	D Length	Outside Dia.
3250-G	1 ½" FNPT	1 ½" MNPT	0.80	3 3/5"	2 3/8" Hex
3250-I	2" FNPT	2" MNPT	1.10	4 ¾"	2 7/8" Hex
3250-K	3" FNPT	3" MNPT	1.65	6 7/8"	4" Hex
3250-L	4" FNPT	4" MNPT	2.20	8 ½"	5 ½" Rnd

Ⓜ Different size end connections are available.

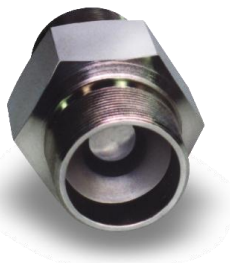


Typical dimensions are listed. Data contained herein can be altered to accommodate design changes and changes to increase performance.

Information on this page is the sole property of L6 Inc. d/b/a Total Valve Systems.

CHECK VALVE – 3260

3260 Series Back Pressure Check Valves are designed for use in liquid or vapor service for bulk storage tanks where flow is desired in only one direction. 3260 Series has male NPT connections on the inlet side and male NPT connections on the outlet side. These valves can also be used as a vacuum breaker or low-pressure relief device.



	A Inlet Connection	B Outlet Connection	C Orifice Dia.	D Length	Outside Dia.
3260-G	1 ½" MNPT	1 ½" FNPT	0.80	3 3/5"	2 3/8" Hex
3260-I	2" MNPT	2" FNPT	1.10	4 ¾"	2 7/8" Hex
3260-K	3" MNPT	3" FNPT	1.65	6 7/8"	4" Hex
3260-L	4" MNPT	4" FNPT	2.20	8 ½"	5 ½" Rnd

Ⓜ Different size end connections are available.

