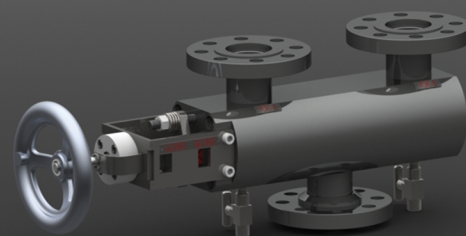


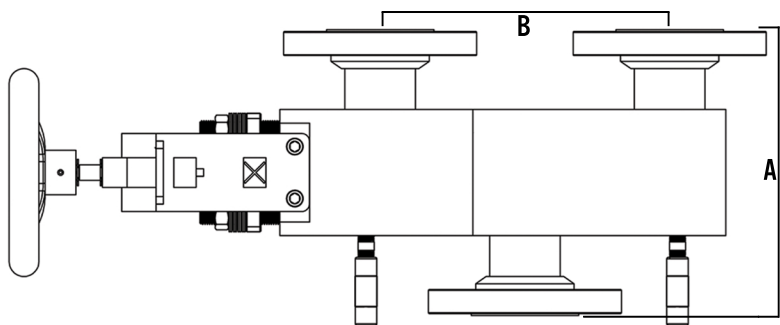
The TVS Engineered Products Model 8000 isolation valve is designed to incorporate two safety relief valves installed on a single vessel system to protect in an overpressure emergency. Only one safety relief valve is in operation at a time while the other is installed to maintain operational integrity by quickly switching to the additional relief valve if the primary relief valve needs maintenance or has a failure. If a problem occurs, such as a leak, you simply switch to the other safety relief valve and remove the faulty valve to make repairs. The Model 8000 ensures one safety relief valve is in operation at all times which yields minimal interruptions to process operations during an unplanned outage.

Features:

- Automatic pressure balance at start of position change
- Pressure bleed valve at each position serves for in-line testing
- Safety handle locks in either position with external indicator
- Low profile design for easy installation in tight areas
- Low pressure drop conforms to API RP 520 Pt. 2 &
- ASME Section VIII Division 1, Appendix M



Model 8000 Specifications



Size:	Class:	Flange:	FtoF: (A)	CtoC: (B)
0.5"	150	RF	6.63"	5.88"
0.5"	300	RF	6.63"	5.88"
0.75"	150	RF	6.63"	5.88"
0.75"	300	RF	6.63"	5.88"
1.0"	150	RF	6.88"	5.88"
1.0"	300	RF	7.13"	5.88"
1.5"	150	RF	9.0"	7.75"
1.5"	300	RF	9.0"	7.75"
2.0"	150	RF	9.38"	9.75"
2.0"	300	RF	9.63"	9.75"

*Typical dimensions are listed. Data contained herein can be altered to accommodate design changes and changes to increase performance. Information on this page is the sole property of TVS Engineered Products