

NOZ-CHEK[®]

Noz-Chek[®] Forged Axial Non-Slam Check Valve

www.cranecpe.com

Noz-Chek[®] Forged Axial Non-Slam Check Valves are now available in forged materials for high pressure services.

Key features include:

- 1 **API 6A Design:** Valve type approved to API 6A PR2
- 2 **High Pressure Class:** Available for up to API 15,000 Pressure classes, and ANSI 2500
- 3 **Threaded Diffuser Assembly:** Threaded diffuser base eliminates sealing area misalignment and ensures valve integrity over full lifetime of valve
- 4 **Locking Snap ring:** Threaded diffuser additionally secured with snap ring to prevent diffuser unscrewing over long term operation



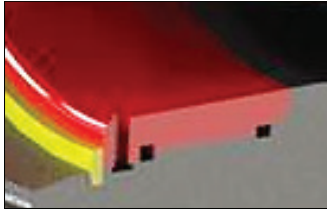
CRANE[®]

www.cranecpe.com

Noz-Chek® Forged Axial Non-Slam Check Valve

Technical Data

- Forged material body and disc assembly
- Threaded diffuser base
- Locking snap ring
- Zero Body Penetrations – No Fugitive emissions



Typical Applications

- FPSO
- Sub-sea oil and gas
- High pressure fluid injection
- High Pressure Gas applications

Size Range*

- 2" up to 24" / DN 50 up to DN 100

Pressure Rating

- API 6A Pressure Class
13.8 MPa–138.0 Mpa (2.000 to 20.000 psi)
- ASME class 150 - 2500 / PN 10, 16, 25, 40, 63, 100

* For other sizes, materials or special requirements please contact your local Sales Representative.

Temperature Range

Standard	Unit	Temp.	Material	Description
ASME	°C	-29 °C to 310 °C	A694 Grade F65	Low Alloy High Yield Carbon Steel
		-51 °C to 315 °C	A182 Grade F51	Duplex Stainless Steel
	°F	-20 °F to 590 °F	A694 Grade F65	Low Alloy High Yield Carbon Steel
		-60 °F to 599 °F	A182 Grade F51	Duplex Stainless Steel

Equivalent materials to DIN standards also available in these ranges.

Materials of Construction

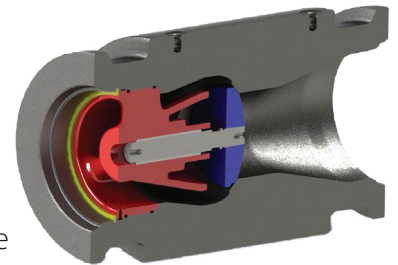
- ASTM A694 Grade F65-Low Alloy High Yield Carbon Steel
- ASTM A240 Grade 316-Stainless Steel
- ASTM A182 Grade F51-Duplex Stainless Steel
- EN 10222-4 P420QH (similar)
- EN 10222-5 X5CrNiMo17-12-2
- EN 10222-5 X2CrNiMoN22-5-
- Other standard forged grades upon request*

Body Configurations

- Manufacturer's standard face to face
- API 6D face to face
- Flanged

End Connections

- Hub End
- Weld End
- RTJ
- Raised Face / Flat Face



Compliance

- API 6A PR2 Type approved
- API 598
- ASME B16:34
- API 6FD
- PED (CE Marking)

Crane Stockham Valve Ltd.
6 Alexander Road,
Cregagh, Belfast, BT6 9HJ
United Kingdom
belfastsales@cranecpe.com
www.cranecpe.com

Crane ChemPharma & Energy, Noz-Chek®

Crane Co., and its subsidiaries cannot accept responsibility for possible errors in catalogues, brochures, other printed materials, and website information. Crane Co. reserves the right to alter its products without notice, including products already on order provided that such alteration can be made without changes being necessary in specifications already agreed. All trademarks in this material are property of the Crane Co. or its subsidiaries. The Crane and Crane brands logotype, in alphabetical order, (ALOYCO®, CENTER LINE®, COMPAC-NOZ®, CRANE®, DEPA®, DUO-CHEK®, ELRO®, FLOWSEAL®, JENKINS®, KROMBACH®, NOZ-CHEK®, PACIFIC VALVES®, RESISTOFLEX®, REVO®, SAUNDERS®, STOCKHAM®, TRIANGLE®, UNI-CHEK®, WTA®, and XOMOX®) are registered trademarks of Crane Co. All rights reserved.